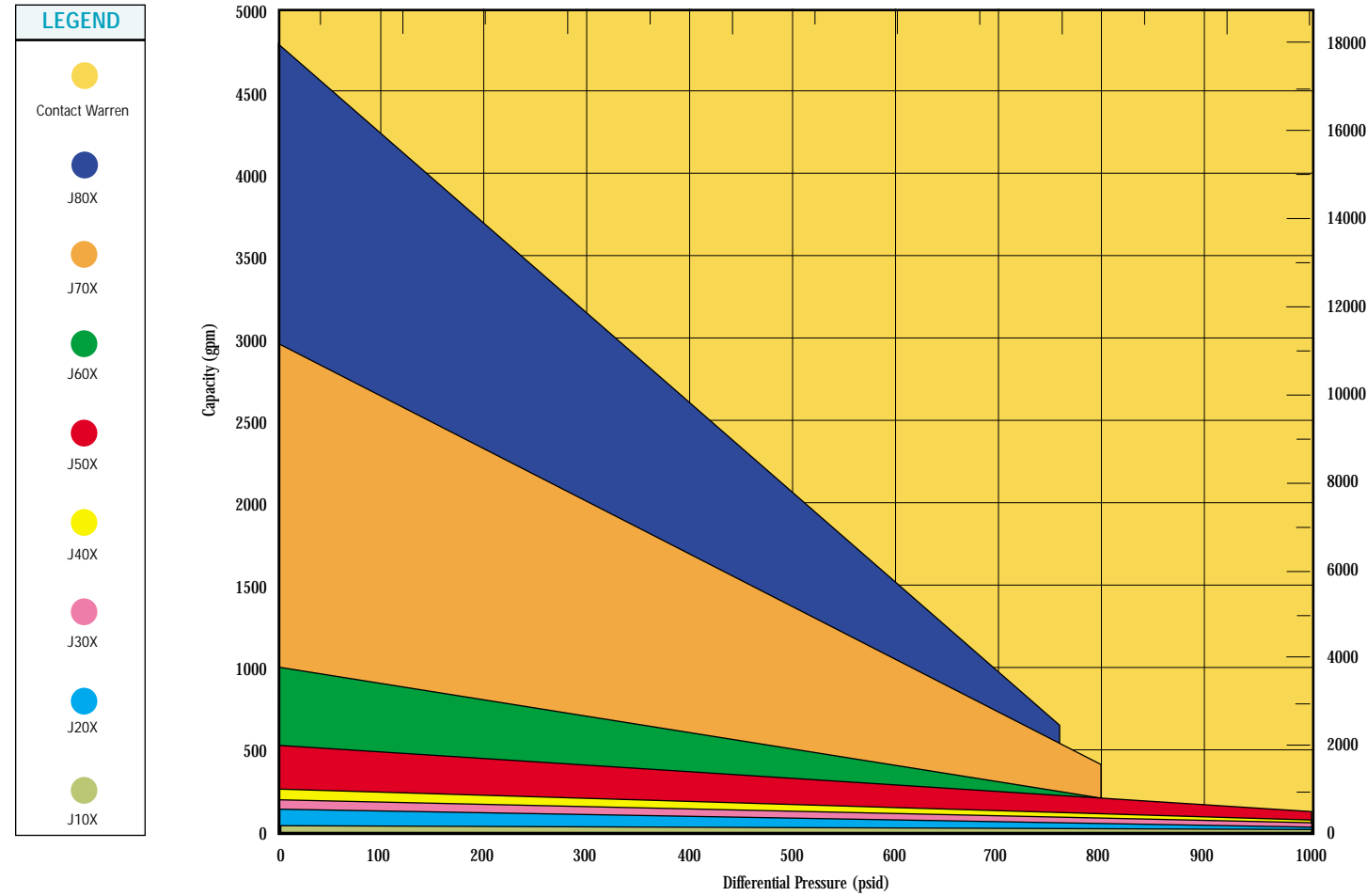


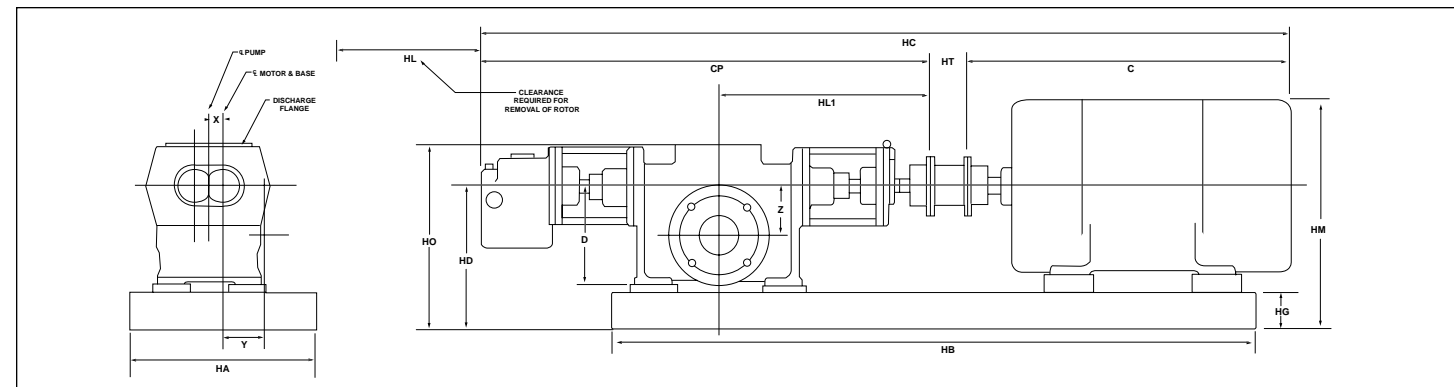
JAGUAR Quick Selection Chart



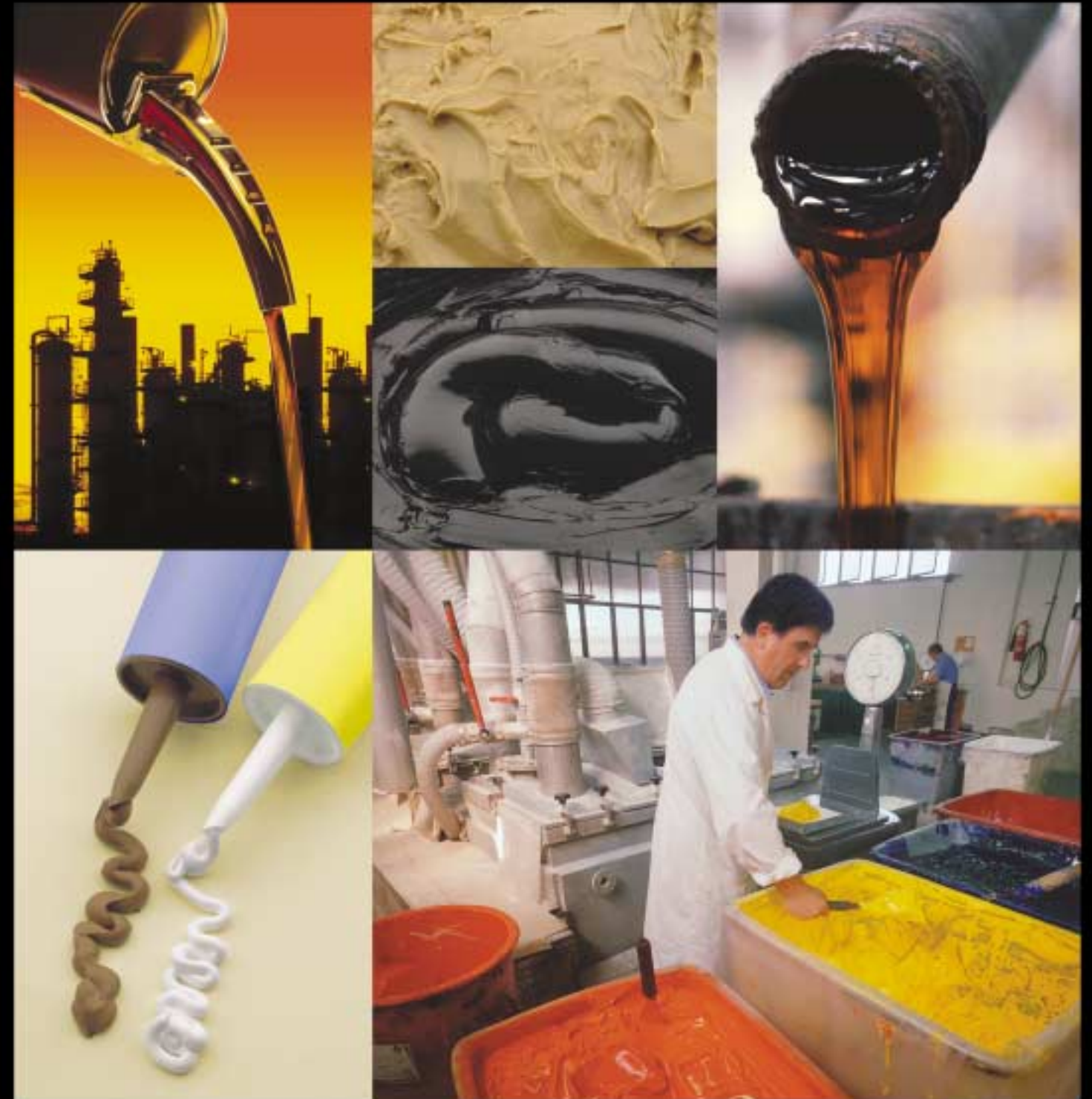
Approximate Dimensions

PUMP SIZE	SUCTION 150# ASA Standard Body	DISCH. 300# ASA Standard Body	SUCTION 150# ASA Hopper Body	DISCH. 300# ASA Hopper Body	MOTOR																					
					HP	RPM	FRAME	C	CP	D	D'	HA	HB	HC	HD	HG	HL	HM	HO	HO'	HT	X	X'	Y	Z	HL'
J-10X	2 1/2"	1 1/2"	6"	2"	25	1750	284T	24 1/16"	34 1/8"	7	4 1/8"	15	46	63 7/16"	10 7/8"	3 7/8"	17	18 1/2"	13 1/4"	16 1/8"	5	2 1/32"	4 1/32"	3 1/32"	3 1/2"	23
J-20X	3"	2"	8"	2 1/2"	40	1750	324T	27 7/16"	39 1/16"	7 1/4"	6 1/8"	18	52 1/16"	12 1/2"	4	19 1/2"	21 1/16"	18 3/8"	18 3/8"	5	1 1/16"	5 1/16"	3 1/16"	3 7/8"	27	
J-30X	4"	3"	8"	3"	60	1750	364T	33 1/16"	44 1/16"	9	6	20	58 7/8"	82 1/8"	13 1/2"	4	22 1/8"	23 1/4"	17 1/2"	20 1/2"	5	1 1/16"	4 1/16"	3 1/16"	4 1/2"	31 1/8"
J-40X	6"	4"	10"	4"	100	1750	405T	38 1/16"	54 1/16"	10 1/4"	6 1/8"	22	70 1/4"	98 1/8"	15 1/4"	4	26 7/8"	26 7/8"	19 1/4"	23 1/16"	5	1 1/16"	5 1/16"	4 1/16"	5	38 1/8"
J-50X	8"	6"	12"	6"	150	1750	445T	44 1/8"	61 1/2"	12 1/2"	7 1/2"	24	81 7/8"	111 7/8"	17	4	30 1/2"	29 1/8"	22 1/8"	26 1/4"	5	2	6	5 1/8"	5 1/4"	44
J-60X	10"	8"	16"	8"	200	1150	8110	65 1/8"	68 1/16"	15	8 1/8"	27	107 1/8"	139 1/16"	21 1/2"	6	34 1/4"	36 1/4"	28	33	5	2 1/4"	8 1/2"	6 1/2"	7	50 1/4"
J-70X	12"	10"	18"	10"	400	1150	8288	71 1/8"	89 1/8"	20 7/8"	9 1/2"	31	125	166	27 1/8"	6	44	71 1/8"	35 3/8"	43 1/4"	5	3	14 1/16"	7 1/2"	11 1/8"	65 1/8"
J-80X	16"	12"	20"	10"	500	870	8309SU	82 1/4"	105 1/4"	23 1/2"	14	36	143 1/2"	193	30 1/2"	6	49 1/8"	71 1/2"	39 1/2"	50 1/2"	5	3 1/4"	14 1/2"	9 1/4"	11 1/4"	75 1/4"

* Dimensions not to be used for construction purposes.



*Hopper body option available.



Warren Pumps
JAGUAR 2200 Series
 Heavy-Duty, Specialty Screw Pumps



Warren Pumps Inc. • 82 Bridges Ave. • PO Box 969 • Warren, MA 01083-0969 USA
 Ph. 413-436-7711 • Fax 413-436-5605 • www.warrenpumps.com • email: warrensales@colfaxcorp.com

WP 4/02 5M

Colfax
 Pump Group
 Two-Screw Team



JAGUAR 2200 Series Heavy-Duty, Specialty Screw Pumps

- Capacities to 4800 GPM
- Discharge pressures to 1000 PSI
- Viscosities to 150,000,000 SSU

Advantages

- Flexible Design
- Variety of Material Options
- Accommodates Most Seal Designs
- Hopper-Style Suction Available
- Capable of handling shear sensitive fluids

Applications

- **Chemical Process Industry**
polymers, synthetic fibers
- **Petroleum Industry**
asphalt, vacuum bottoms, residuals, crude oils
- **General Industry**
food, power, barges

Options

- Iron, Cast Steel, Stainless Steel Casing
- Chrome Plated Bores
- Hard Fused Coating on Rotors
- Nitrided Timing Gears
- External Seal Lubrication
- General Compliance with API676



Typical hopper style Jaguar suitable for mounting beneath a reactor.

